

What makes a home?

Response 31

Welcome to The Response, a collaborative artistic endeavour produced by Fabrica volunteers in reaction to the current exhibition. Within this magazine you'll find illustrated our ideas and thoughts in visual, verbal and photographic form.

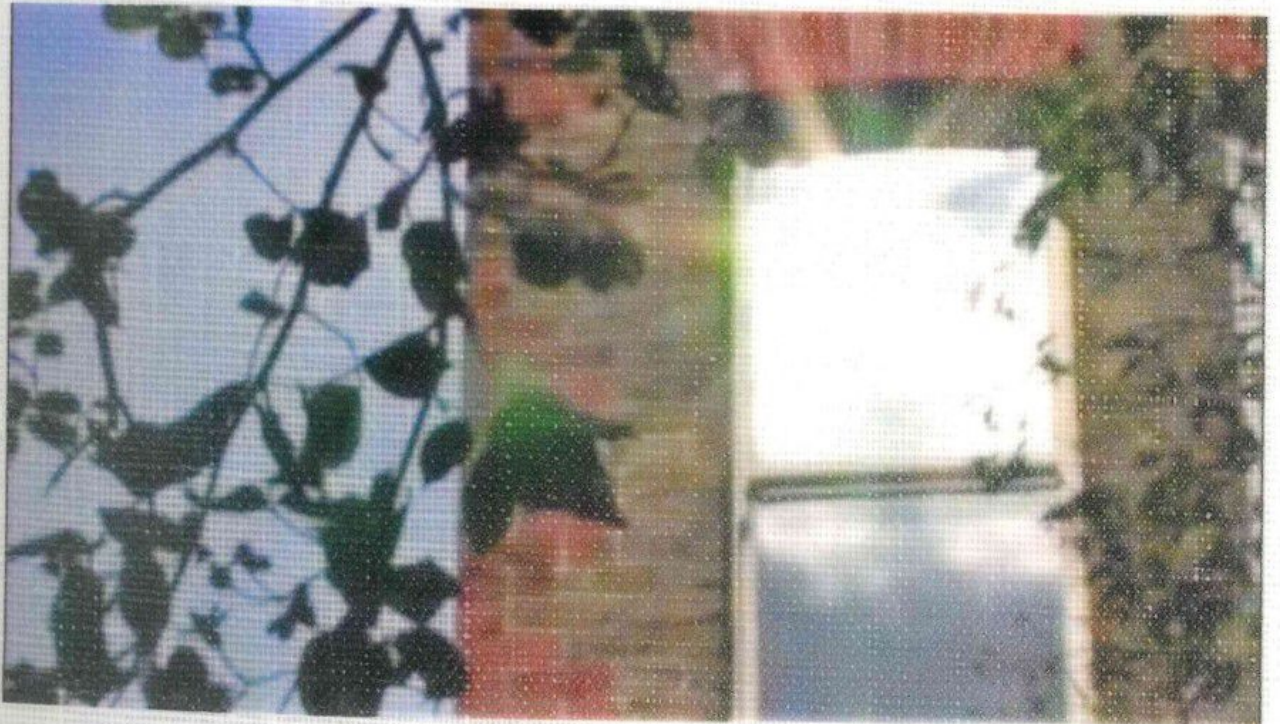
Harley Weir's Homes prompted much discussion when we were considering the theme of our artist call-out. We were wary of the ethical implications of the work and our reactions to it; we talked at length about the nature of photographing the vulnerable and the refugee crisis. The more we spoke, the more we realised our precarious position, and it took us several hours of discussing the ethical problematics of the images until we decided on a point of departure, 'What makes a home?' Our aim with this question was not to belittle the experiences of people through a crude comparison of material wealth but rather to show how the interpretative properties of such a word as 'home' are malleable and unfold from person to person.

The materiality of the final product was led by our conversations about the textural nature of the photographs hanging in Fabrica. We considered the transitory quality of the scaffold debris netting, a fabric whose life-span is dependent upon the solid, metal structure it surrounds. When seen up close and touched, the characteristics of the material shift from the gentle silkiness it purports to inhabit when viewed from afar to something rough and durable. We believed the inherent contradictory duality of this fabric worked in tandem with the ideas structure behind Weir's images; materials / fabrics adapted for temporary dwellings that eventually began to betray their weaknesses as construction materials. As more and more people pick up, handle and leaf through The Response, the structure of the magazine will weaken, edges may fray and the characteristic fragility of humanity will be laid bare.

Written by Naomi Cooperman

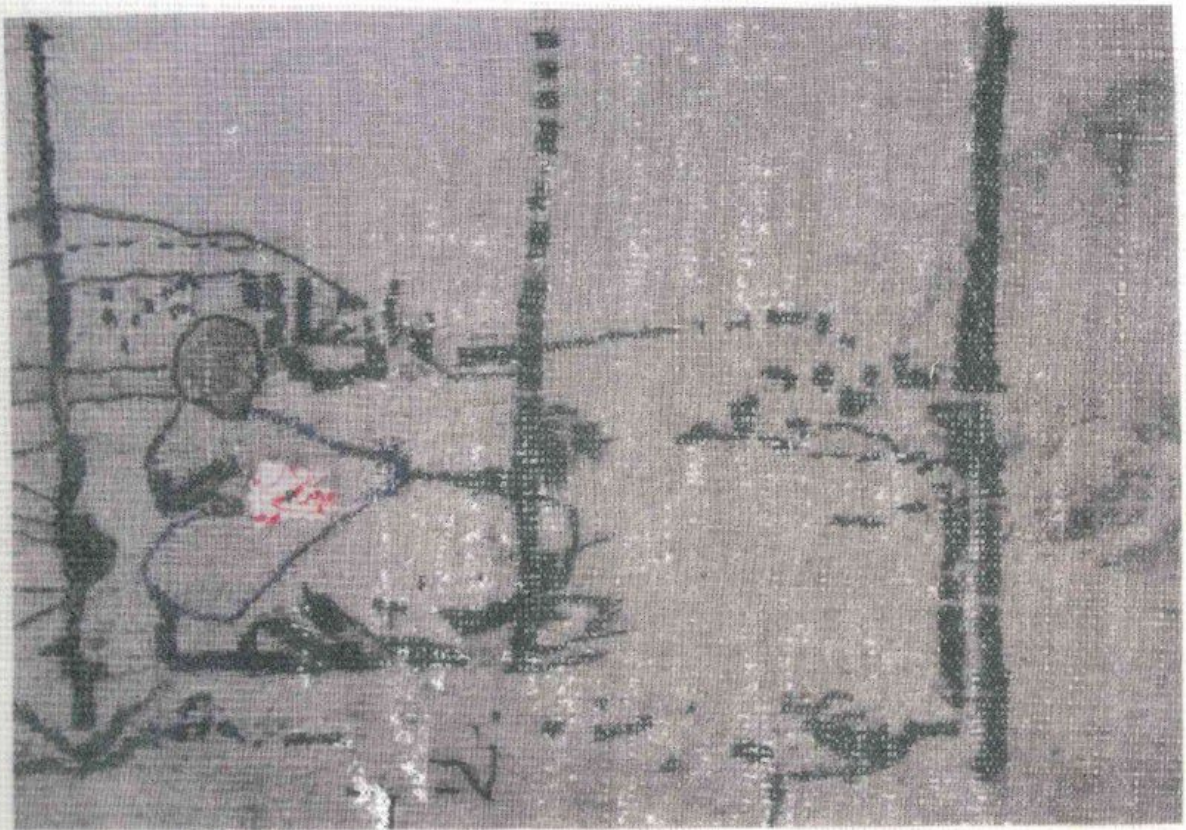




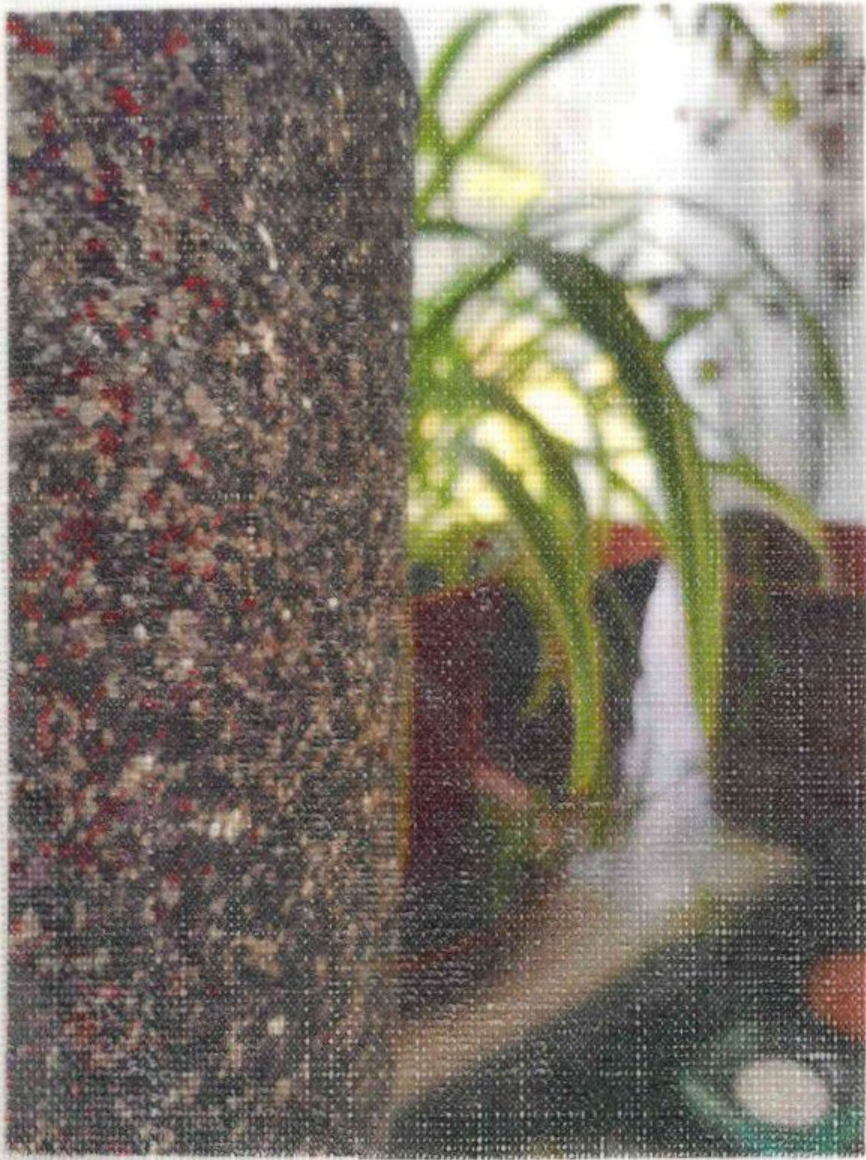












Home

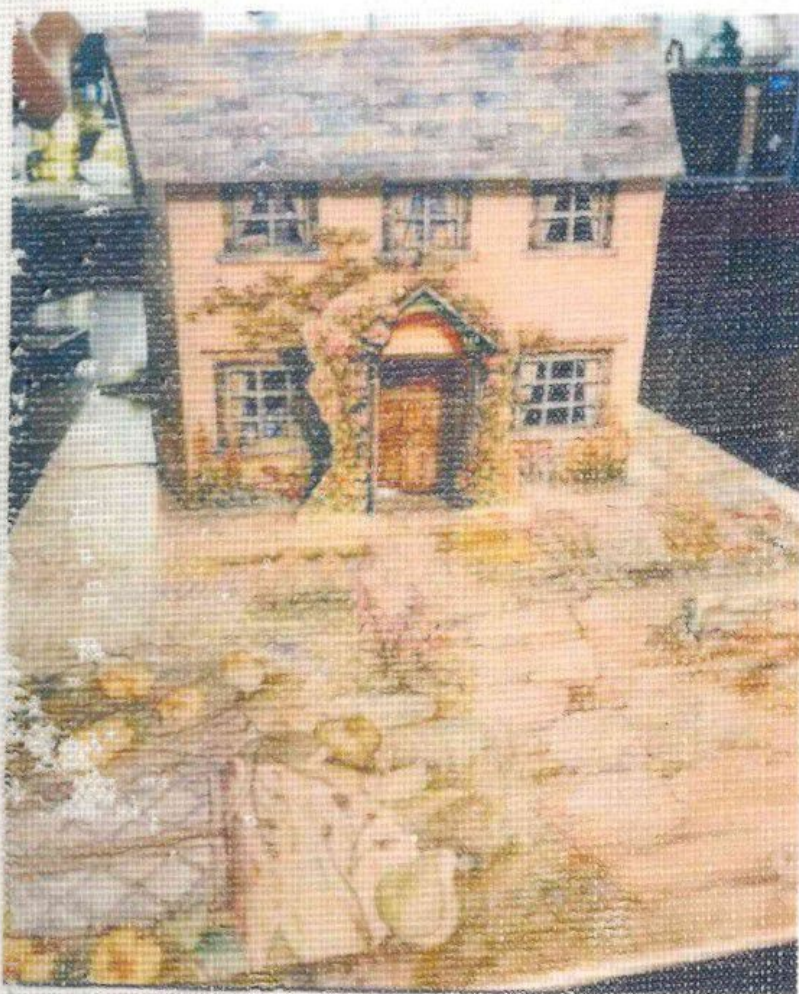
It is the place you want to come back at night.

Where you feel peaceful.

It is where you fall asleep in the arms of the person you love.

When you feel safe and free.

The first glimpse of light in the morning



Peter Rabbit Home

New! From Sarcasmo
P-O-V MAPS

Do you have a small flat? No need for places like 'Namibia' or 'Belarus'? Want to save this world some valuable ink?

Why, we might have the product for you!

SARCASMO is proud to present their POV Maps -
THE modern depiction of a necessary world.

With over five editions to choose from, you will no longer need to worry about getting lost in the nonsense of irrelevant nations. Thanks to our 'updated' globe, you can focus on the crucial picture - enjoying the essentials without all the other confusing baggage.

Streamline your geography today!

Fun!

Simple!

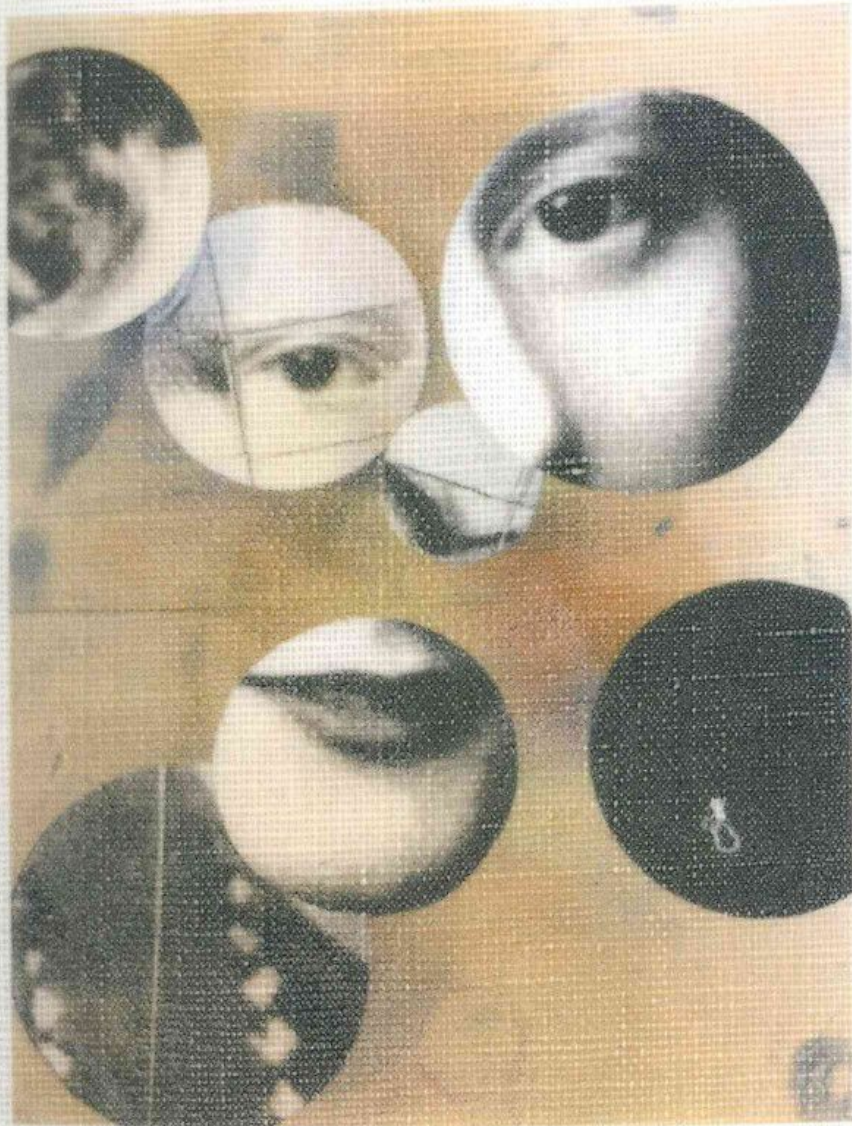
Affordable!



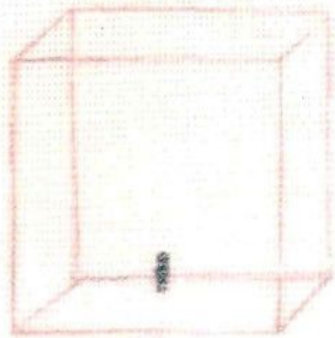
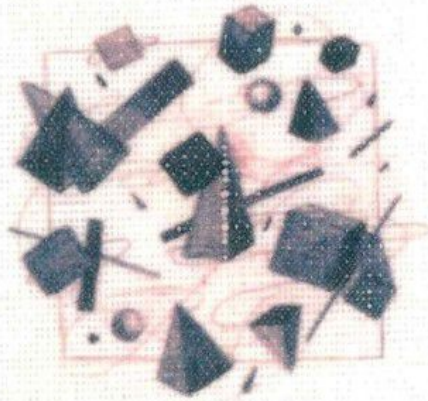
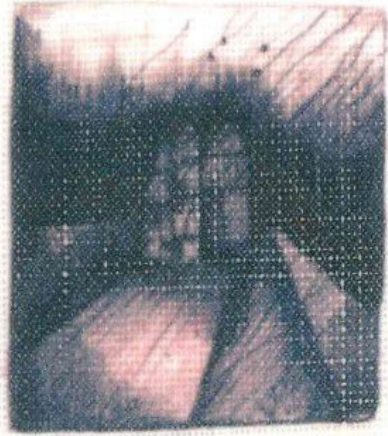
KEYS DRAWINGS SPAGHETTI BOLOGNESE
TEETH BRICKS PARTY LAUGHTER
SHELVES MESS CLEANING WALLS
STUFF WATCHING MUSIC SOFA
SHOWER MAKING FIRE BOXES
WARMS BATH ORGANISE
SLEEP WARM BATH ORGANISE
CUPBOARD & WARDEN SHELF FOOD BOXES
BOARD & WARDEN SHELF FOOD BOXES
COMBING COOKING COOKING COOKING
MADNESS COOKING COOKING COOKING
SHIRTS COOKING COOKING COOKING
CLOTHES COOKING COOKING COOKING
LIGHT PLANTS CATS DOGS
CHAIR TV PLANTS CATS DOGS
ART SMELL ART SMELL



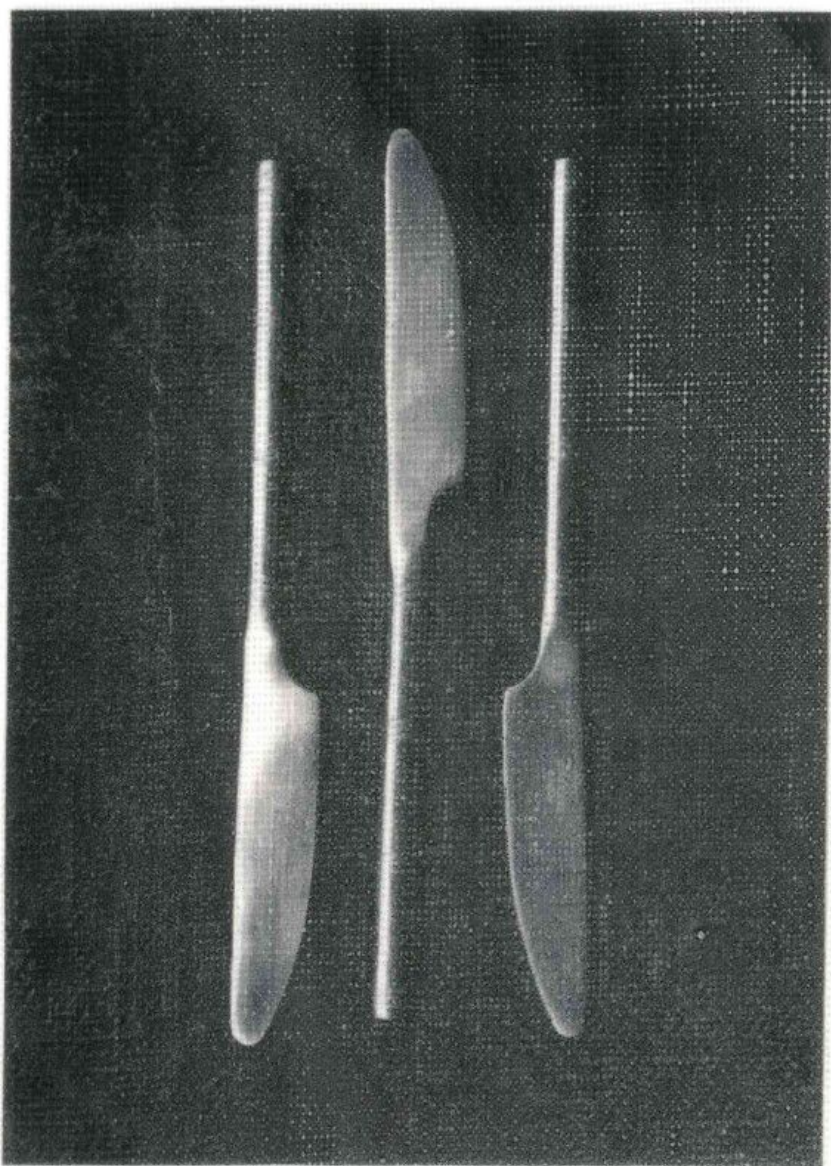


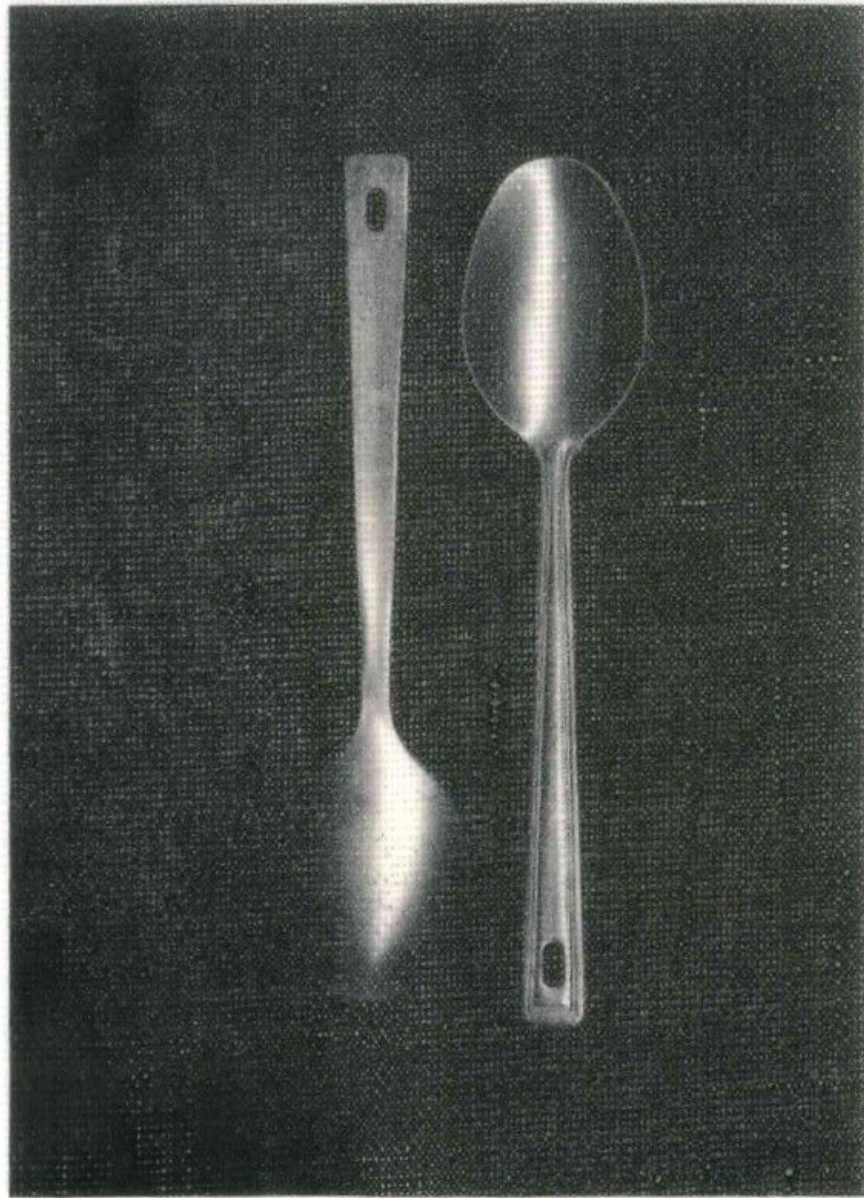












Artistic Contributions

**Al Coffey
Angi Lowri
Collette Mc Dowell
Ess Kore
Gemma Mughini
Jake Francis
Joe Ainsworth
Katherine E Winnick
Liz Schwarz
Nikki Willis
Ola Teper**

Response Magazine Team

**Al Coffey
Joe Ainsworth
Naomi Cooperman
Nikki Willis
Robin Bellamy
Tom Nicholson**

**View this edition of the Response and past issues online
www.fabrica.org.uk/the-response**

FABRICA
BRIGHTON'S CENTRE FOR CONTEMPORARY ART